



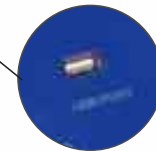
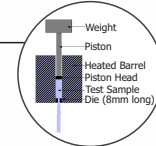
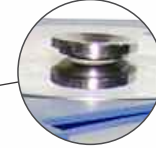
Melt Flow Index - NEO 2.0



Test Report

Precision Load Cell

HMI Based Touch Screen



Automatic Sample Cutting

USB Port

Model No. MFI-NEO 2.0

Melt Flow Index Tester – NEO 2.0 Model is a consistent tool useful for checking the flow properties of molten plastics/resins. PRESTO Melt Flow Index Tester is manufactured under various Test Standards ASTM D 1238-1992, IS 2267-1972, IS 2530-1963, IS 10810-1984.

Other model available are Melt Flow Index Tester – Deluxe Model with Digital PID Controller.

- HMI based Touchscreen Model
- Result of MFI for individual test & average of all test.
- Microprocessor based inbuilt PID controller
- Automatic sample cutting
- Temperature setting and Preset Timer functions incorporated in HMI for accuracy and repeatability
- Die Steel barrel for uniform and consistent heating of barrel/test cylinder.
- Test report can be generated in PDF format.
- Program profile for selecting test parameters and performing the test.
- Easy Data Management. User can create product identification, test temperature, time etc.
- USB option available for storing test data (Pen drive not a part of offer)
- Data output in PDF and CSV file format.
- Can be programmed Pre-Heating Time.
- Calculate the Direct MFI value with High precision Load cell interface
- Calculate the Test results Min. /Max. /Avg.

Melt Flow Index is defined as the rate of flow of extrudate of molten resins through a jet of a specific length and diameter under prescribed conditions of temperature, load and piston position inside a heated metallic barrel. Melt flow Index of thermoplastic material is expressed in terms of grams per 10 min of extrudate of molten resins that flow through the heated cylindrical barrel.



Presto Stantest Pvt. Ltd.

I-42, DLF Industrial Area Phase-1, Delhi Mathura Road, Faridabad 121003, Haryana, India
 P : 9210 903 903, +91 129 4272727, 93111 24302 E : info@prestogroup.com



- Faridabad • Sonipat • Kolkata • Mumbai • Pune • Ahmedabad
- Chennai • Bangalore • Hyderabad

www.prestogroup.com

Key Specifications:

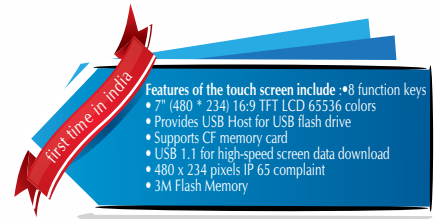
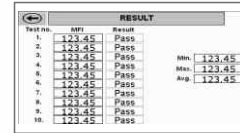
Display	HMI Based touchscreen 7"
Temperature Range	Ambient to 400° C
Accuracy	± 1°C
Least Count/Resolution	0.1°C
Power	220V , Single phase, 50 Hz
Sample Cutting	Automatic Motorized
Temperature Control	Inbuilt PID Temperature Controller
Timer	Inbuilt in HMI Preset Timer upto 999 sec.
Inner Diameter of heating barrel(cylinder)	9.550mm ± 0.007mm
Inner Diameter of Die	2.095mm ± 0.005mm
Diameter of piston head	9.474mm ± 0.007
Material of Heating Barrel(Cylinder)	Die Steel
Sample Cutting Motor	Torque 7Kg/cm ² , 60RPM
Load Cell	Range 800 gm, Least count 0.01 gm

Highlights:

Test Report	Yes, in PDF format
No. of Dead Weights	4 (1.2kg, 2.16kg, 3.8kg, 5kg)
Material	Mild Steel
Finish	Powder coated Havel Gray & Blue combination finish and bright chrome / zinc plating for corrosion resistant finish
Dimensions	400 x 580 x 630 mm

Optional Features:

- Melt Flow Index Deluxe model also available.
- Other specific deadweight also available on request



Standard Accessories :-

- Orifice Inbuilt - 1
- Funnel - 1
- Mirror with stand - 1
- Piston - 1
- Deadweight - 4
- Orifice cleaner - 1
- Barrel cleaner - 1
- Material Charger - 1
- Plumb line - 1
- Spool - 1
- Load Cell with pan in-built - 1

Thank you customers for choosing us as your partners in growth !



*All the above logos are the sole property of their respective owners and are used purely for depiction purposes only.

OUR OTHER PRODUCTS :-



www.prestogroup.com

